

Ragweed pollen trend

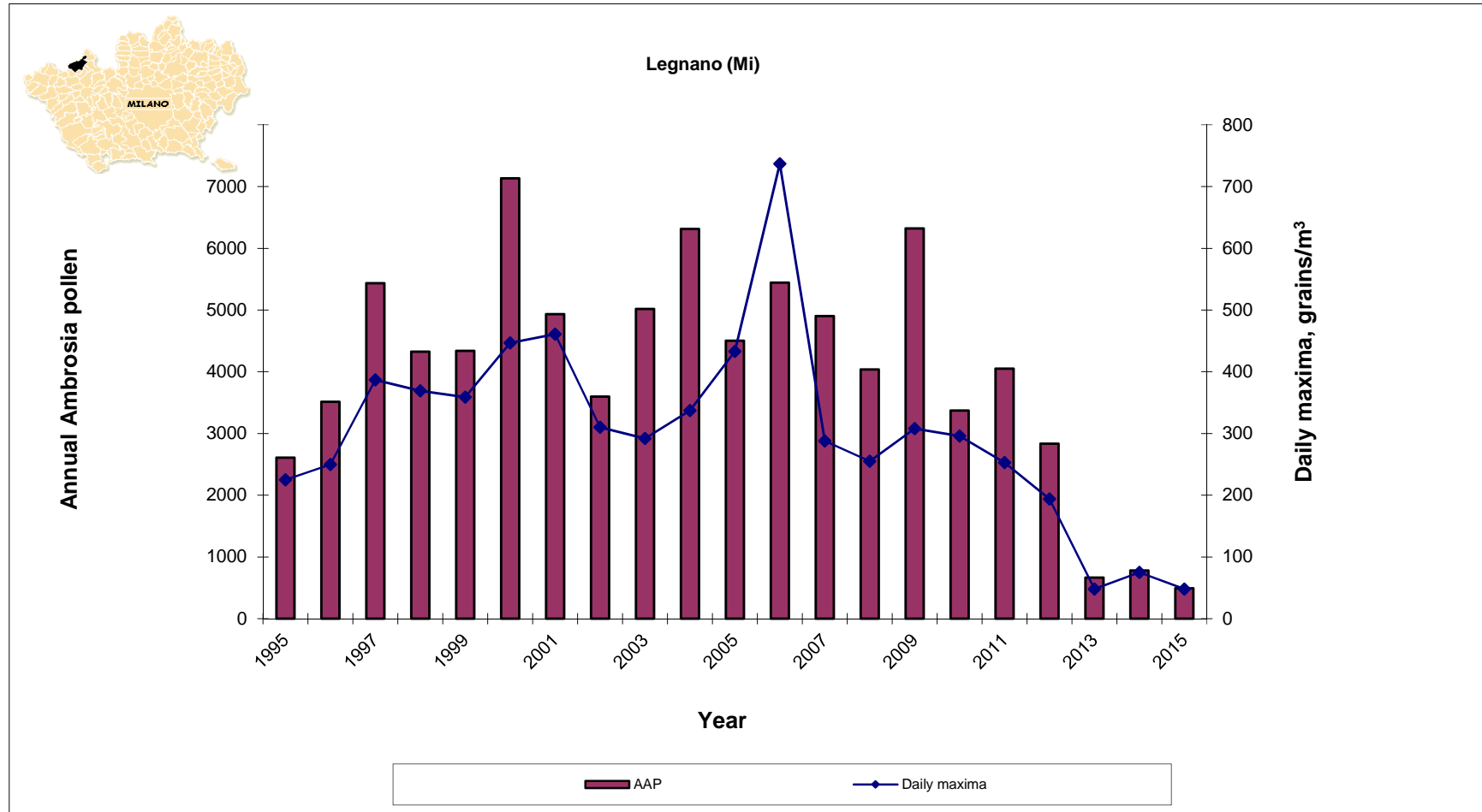
M. Bonini– ATS Milano Città Metropolitana

Sistema Socio Sanitario



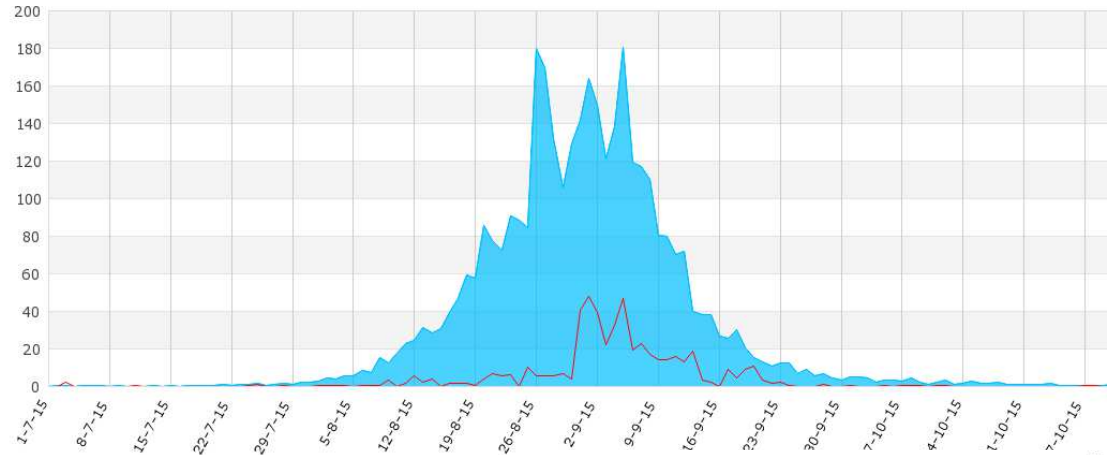
ATS Milano
Città Metropolitana

Legnano

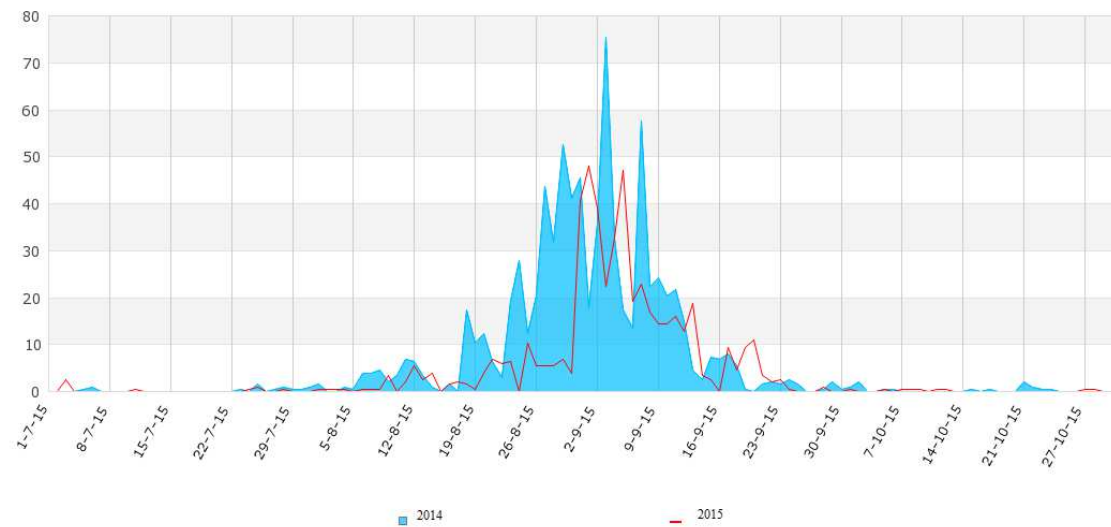


Legnano

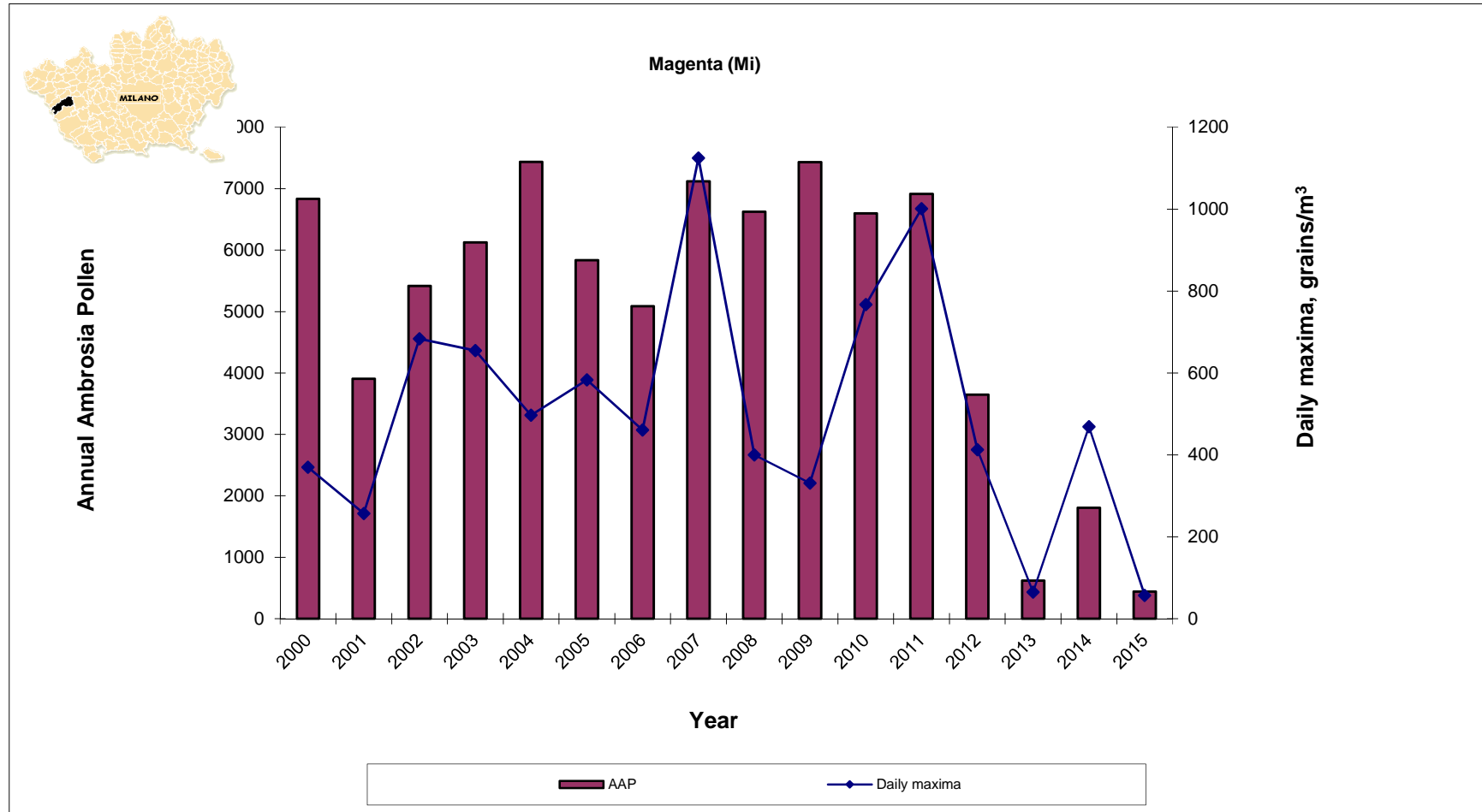
Legnano (Mi) - Italy
2015 vs average 2005-2014



Legnano (Mi) - Italy
2015 vs 2014

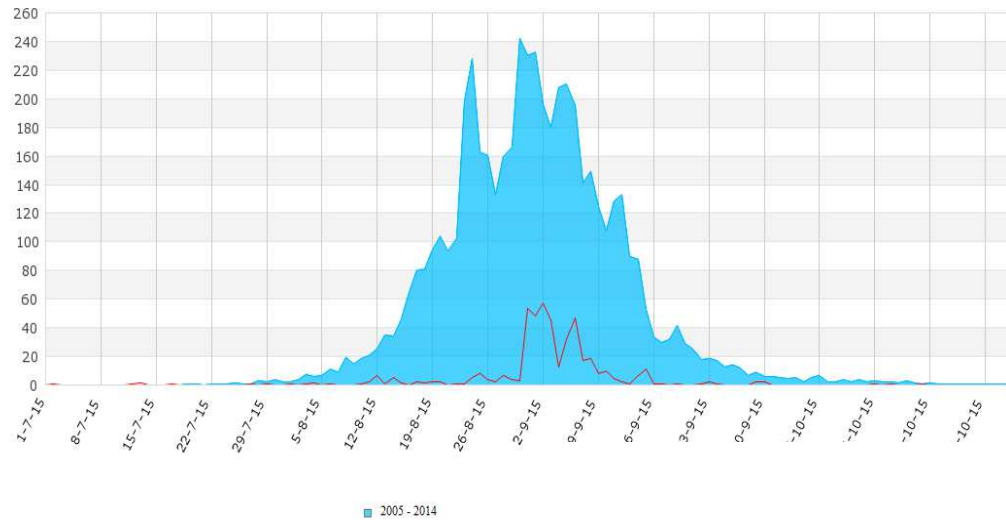


Magenta

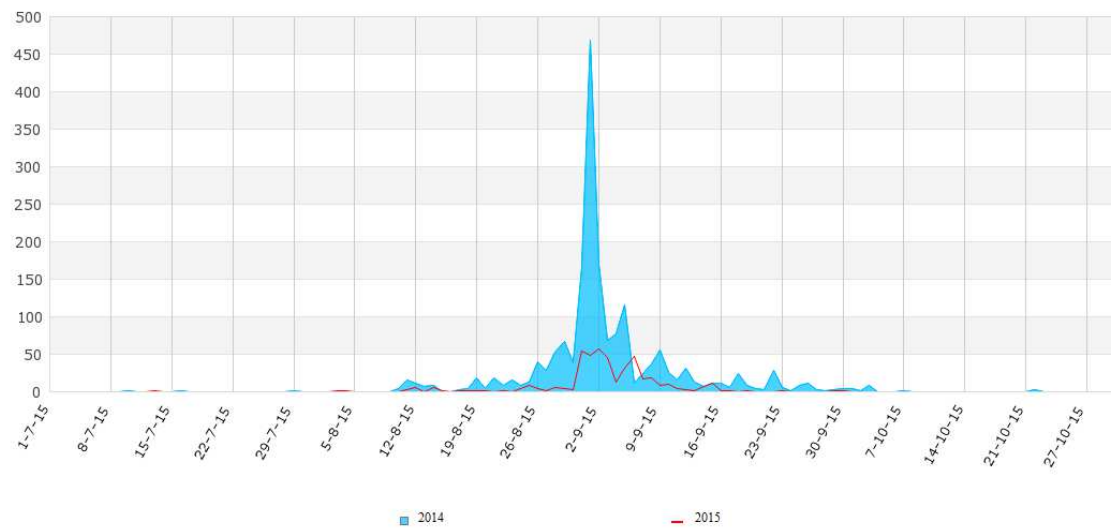


Magenta

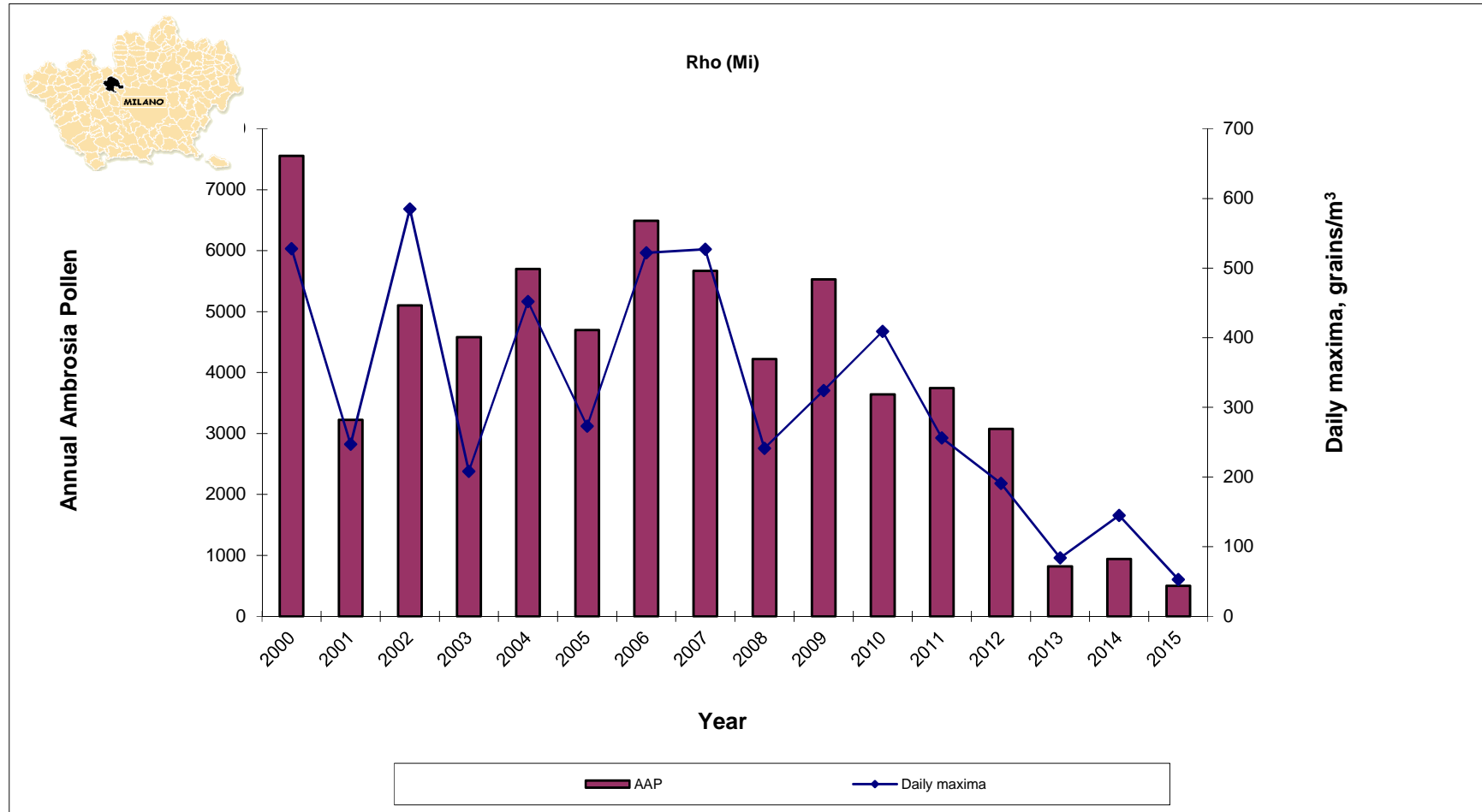
Magenta (Mi) - Italy
2015 vs average 2005-2014



Magenta (Mi) - Italy
2015 vs 2014

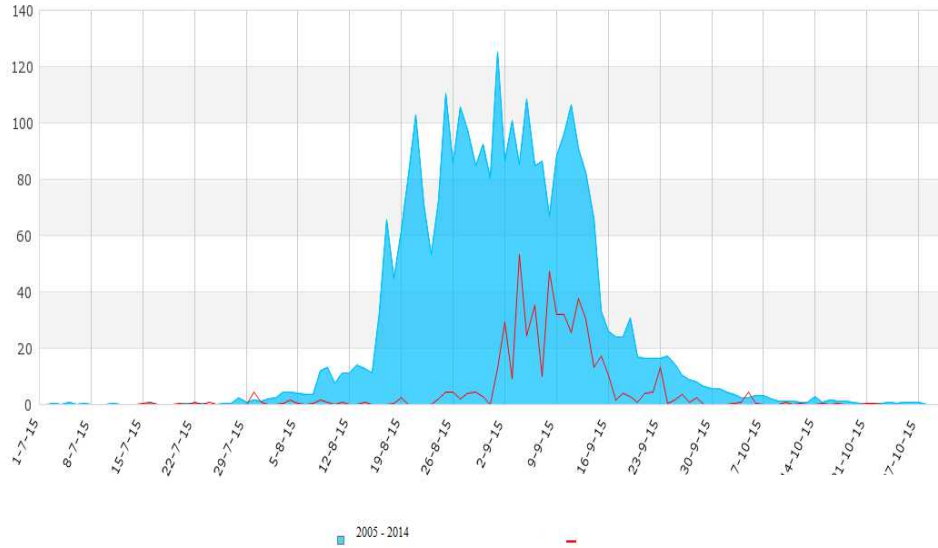


Rho

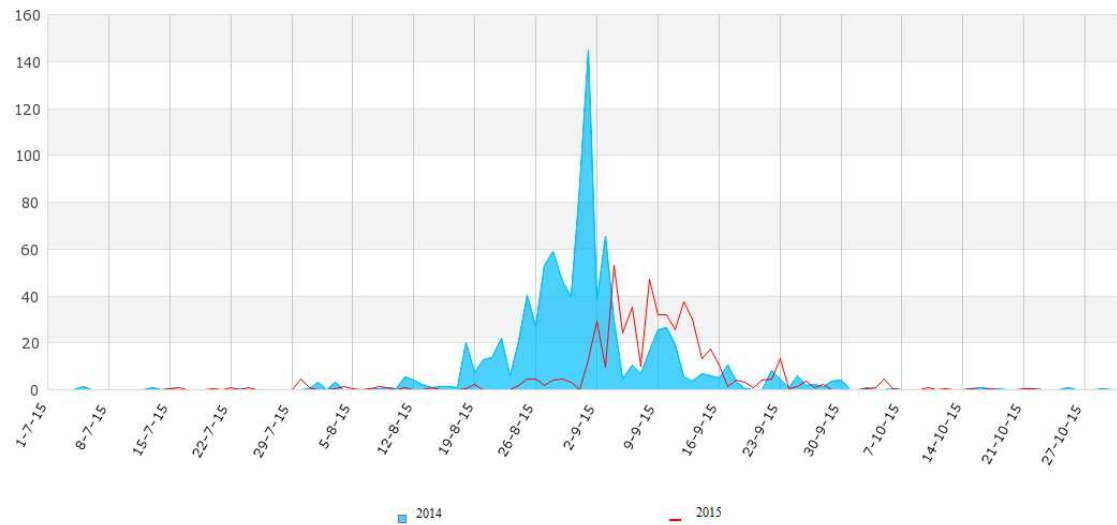


Rho

Passirana di Rho (Mi) - Italy
2015 vs average 2005-2014



Passirana di Rho (Mi) - Italy
2015 vs 2014



Trend aree infestate

Percentage of infested areas vs checked areas

